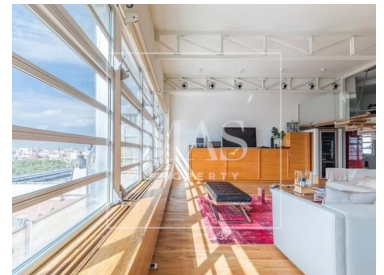




Madrid - Penthouse



2

Bedrooms



2

Bathrooms



131

Area (m²)**2 100 000 €**

(EUR €)

Beautiful Penthouse with 2 Bedrooms in Jeronimos

Luxury and exclusivity in the Jerónimos neighborhood. This unique apartment offers unobstructed views of the Prado Museum and the San Jerónimo church, and is located next to the most exclusive and recently renovated hotels in Madrid. It is also just steps away from the main museums and Retiro Park. The classic building was completely renovated 10 years ago. The apartment is designed for those who enjoy luxury and exclusivity, with a current layout featuring 1 en-suite bedroom and a second bedroom and bathroom for guests in the loft. The spacious living room offers spectacular views. The building entrance is well-maintained and has no architectural barriers, and the elegant property has a physical doorman. The Jerónimos neighborhood is one of the most representative and exclusive in Madrid, located in the city center. It borders the famous Real Jardín Botánico and Retiro Park, with its lake, numerous interior walks, ponds, and lush groves. The area is home to many monuments and art centers, from the Puerta de Alcalá to the renowned Prado Museum. Numerous public institutions are also located in the neighborhood, such as the beautiful Palacio de

**Maximilian Stjernstrom**

Real Estate Agent

+34673262123 · +34951203035

maximilian@masproperty.com

T +34 951560975 · T +34 673262123 · E info@maspropertymadrid.com**Calle del Mesón de Paredes, 1, 28012 Madrid Spain****AMI 010203**¹ (Call to national fixed network) | ² (Call to national mobile network)



MASM58223

Reference

Scan the QR code to view the property



Comunicaciones, the Madrid Stock Exchange, and the Navy Headquarters. The area also boasts top-level hotels and dining establishments, such as the Ritz Hotel and the well-known Horcher restaurant. The neighborhood has excellent transportation options, including the Metro, bus lines, and the Atocha station, which serves high-speed AVE trains and commuter trains.

Welcome to the vibrant and historic city of Madrid, where every corner is filled with charm and character. As you explore this dynamic metropolis, you will uncover a plethora of delightful eateries within a 15-minute radius. The closest, Plató, is just a 2-minute walk away, offering a taste of traditional Spanish cuisine. A short stroll of 5 minutes will lead you to El Botánico, where you can indulge in delectable dishes amidst a picturesque outdoor setting. For a truly unique dining experience, Balzac and Viridiana are also within a 5-minute walking distance, showcasing the diverse culinary landscape of the city. As you wander through the city streets, you will also be greeted by an array of enchanting gardens and natural spaces, including Plaza de la Lealtad, a mere 3-minute walk away, and Plantas ornamentales, just 7 minutes on foot. To add to the convenience, transportation options are plentiful, with Neptuno bus stop a mere 3-minute walk away, ensuring easy access to all the city has to offer. Additionally, you will find a selection of pharmacies and grocery stores within close proximity, making everyday necessities easily accessible. Whether you're seeking tranquility in nature, culinary delights, or convenient amenities, Madrid welcomes you to experience its unique blend of history, culture, and modernity.

Property Features

- Built year: 1925
- Lift



Maximilian Stjernstrom

Real Estate Agent

+34673262123 · +34951203035

maximilian@masproperty.com

T +34 951560975 · T +34 673262123 · E info@maspropertymadrid.com

Calle del Mesón de Paredes, 1, 28012 Madrid Spain
AMI 010203

¹ (Call to national fixed network) | ² (Call to national mobile network)